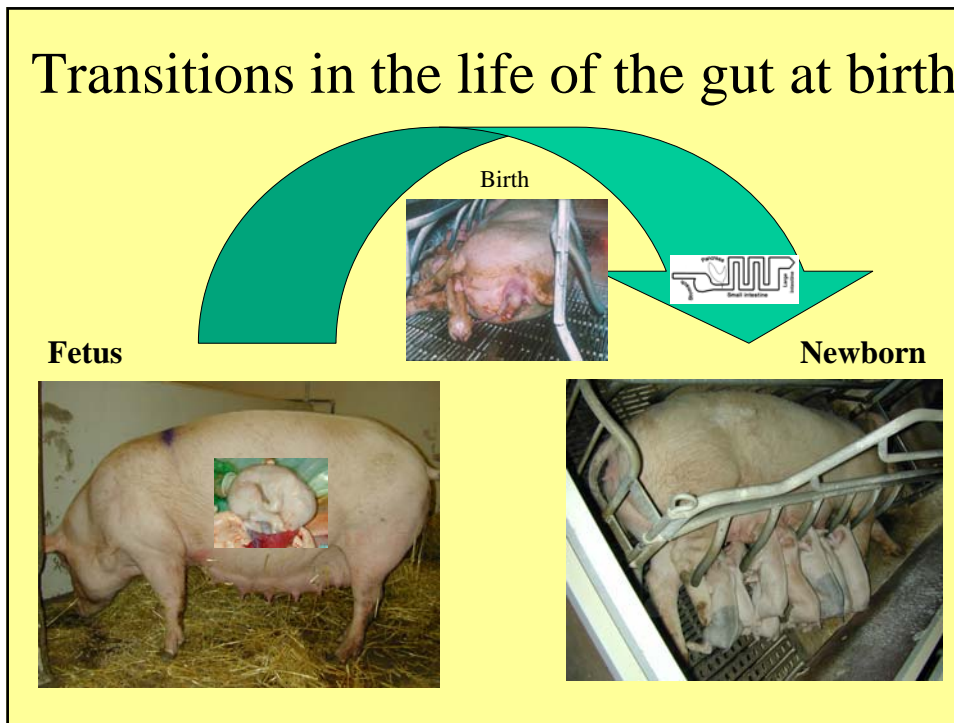
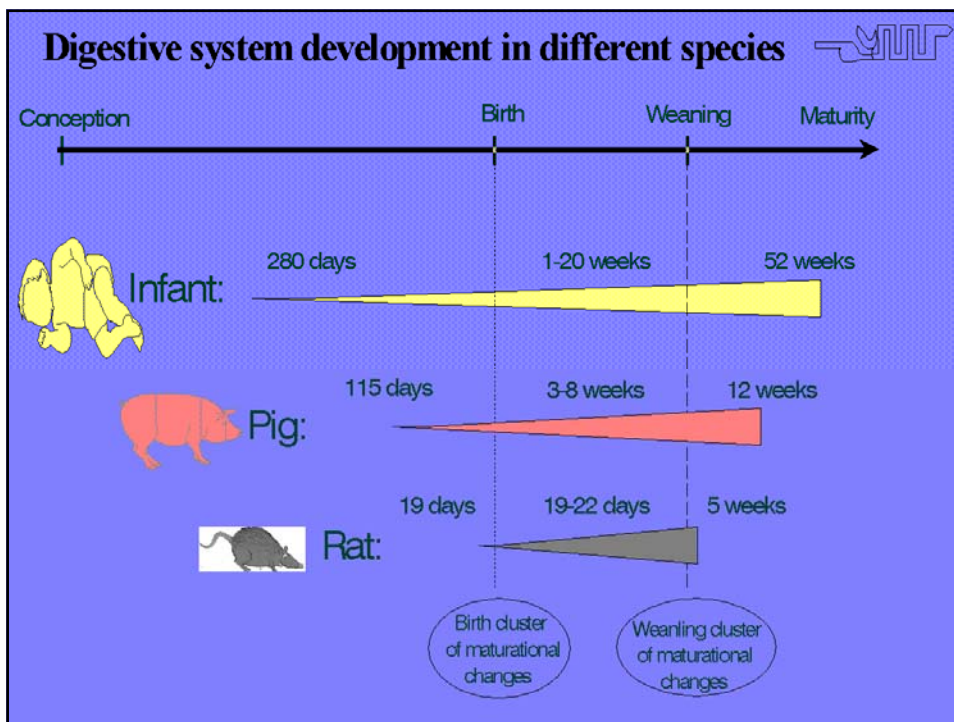


Transitions in the life of the gut at birth

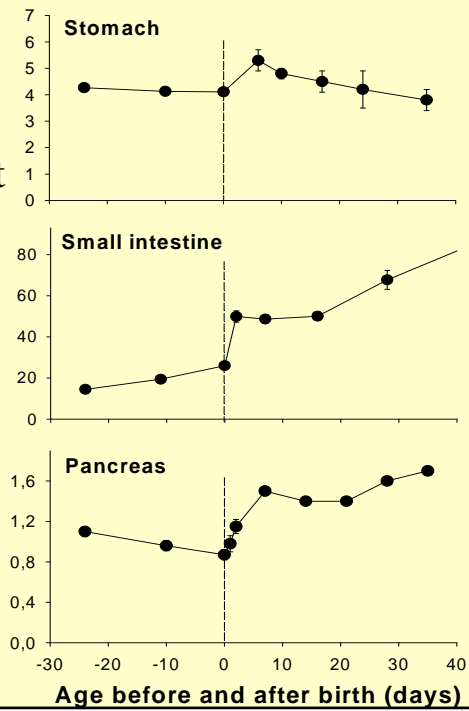


Digestive system development in different species

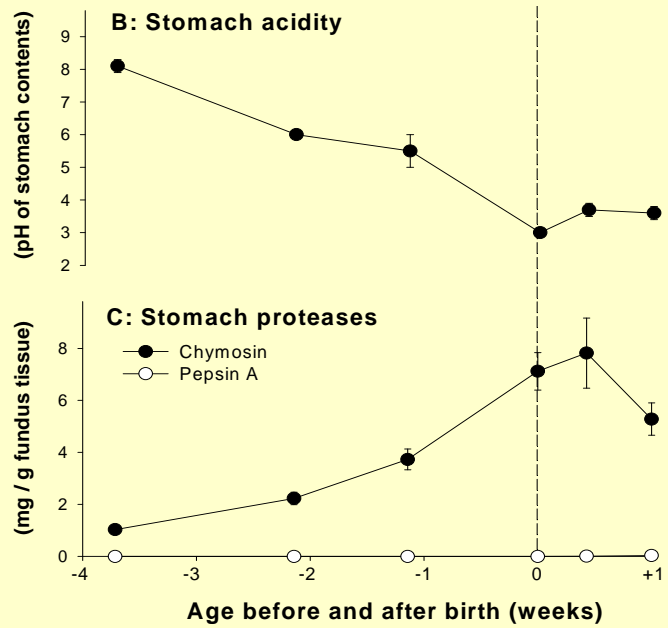


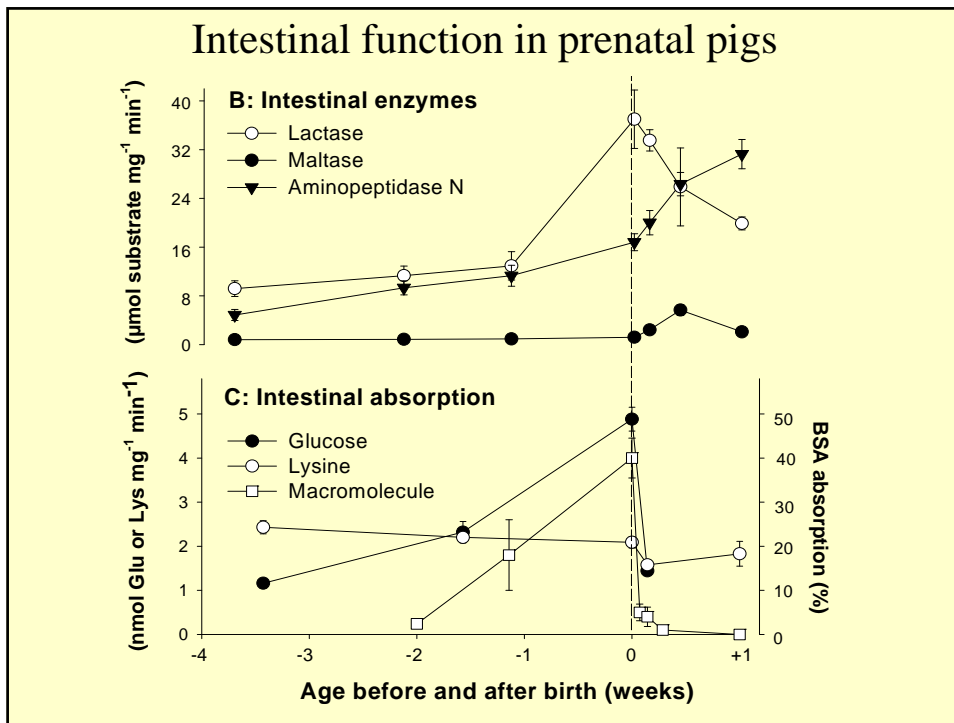
Pre- and postnatal development of the pig GIT weight

(g/kg body)

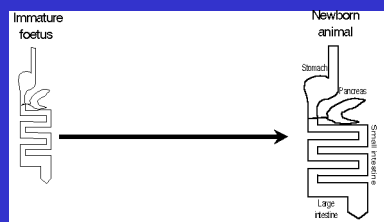


Stomach function in prenatal pigs



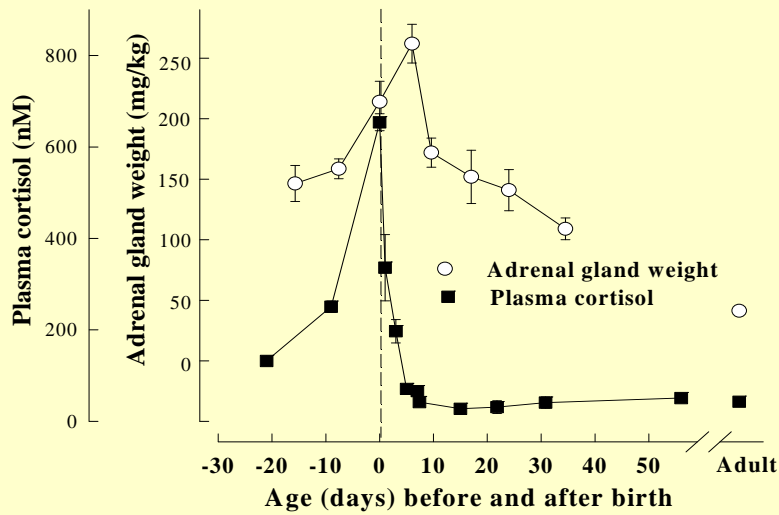


What affects gut function in the perinatal period?

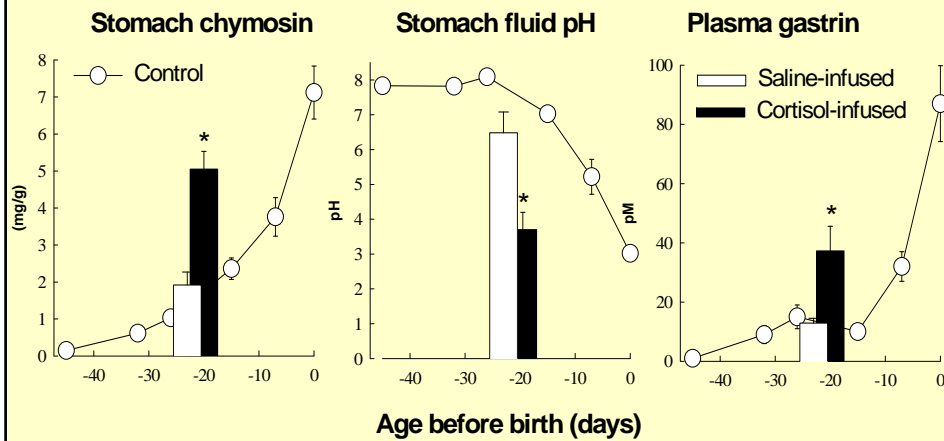


- 1) Developmental hormone profiles?
- 2) Birth process?
- 3) Enteral nutrition?

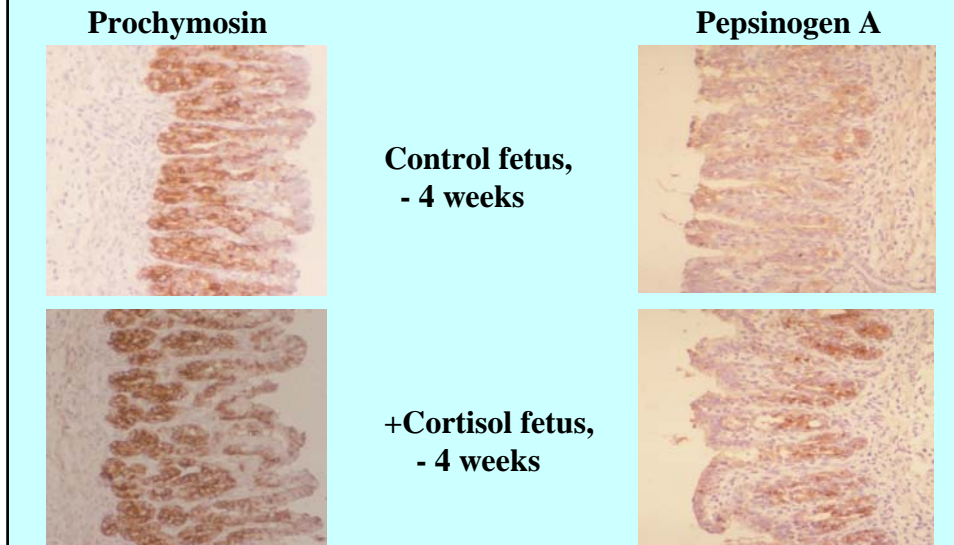
Development of plasma cortisol before and after birth



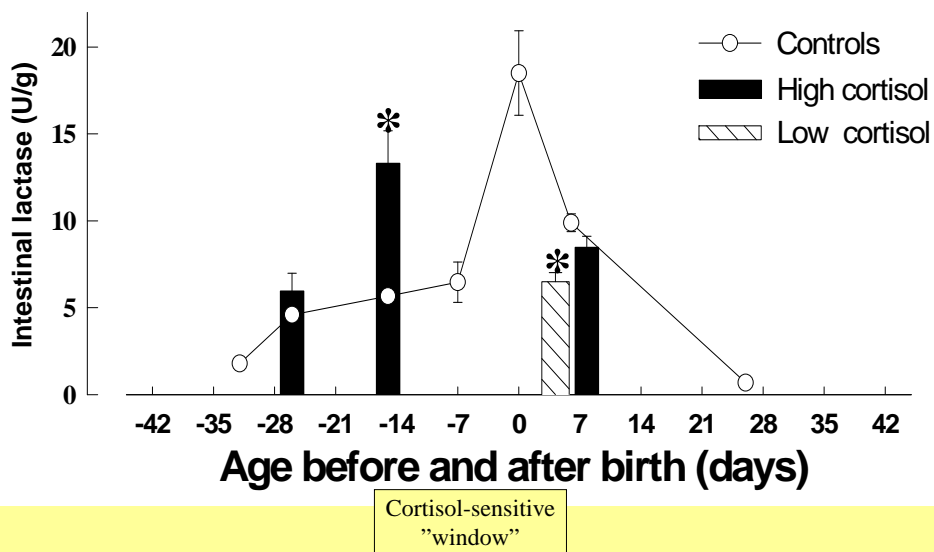
Effects of cortisol on stomach function in fetal pigs



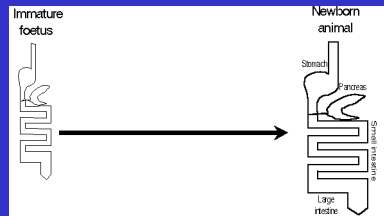
Gastric proteases in the pig fetus can be induced by cortisol



The perinatal rise in SI lactase activity is affected by manipulating cortisol levels

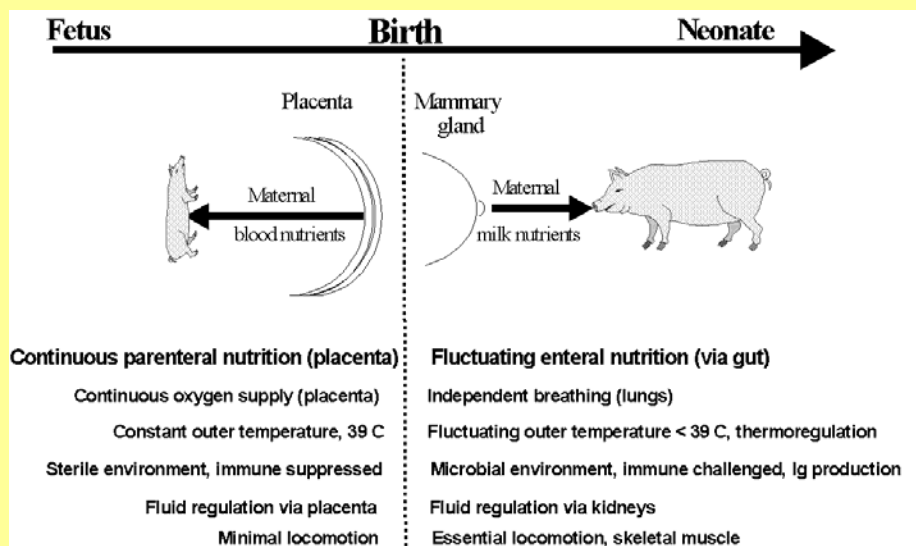


What affects gut function in the perinatal period?

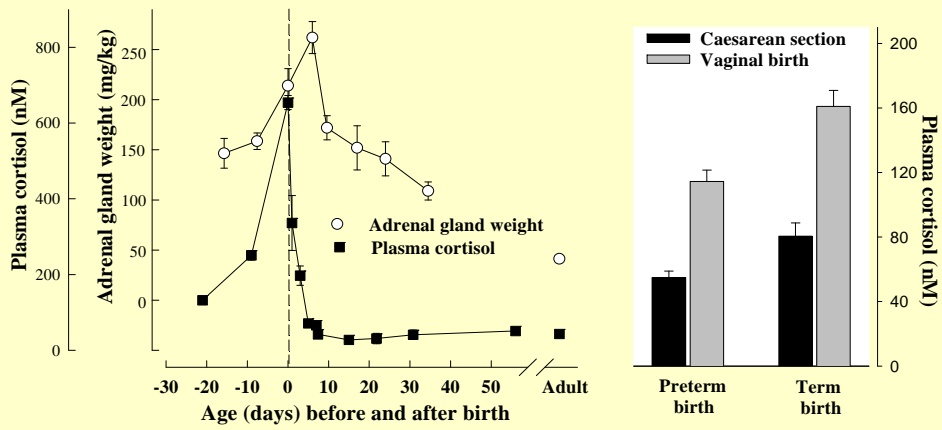


- 1) Developmental hormone profiles?
- 2) Birth process?
- 3) Enteral nutrition?

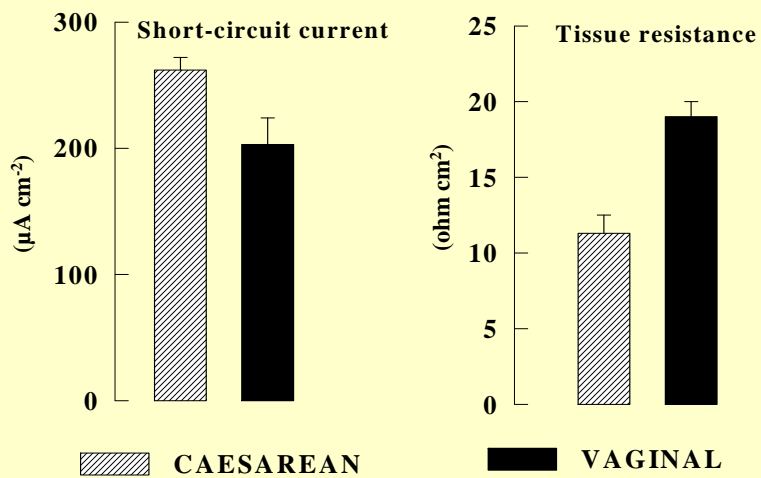
Physiological transitions at birth



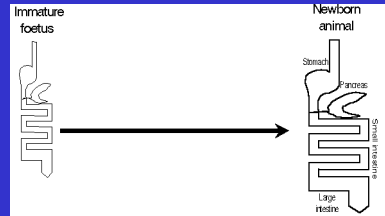
Development of plasma cortisol before and after birth



Vaginal birth affects intestinal permeability in premature pigs



What affects gut function in the perinatal period?



- 1) Developmental hormone profiles?
- 2) Birth process?
- 3) Enteral nutrition?

Nutritional transition at birth

